

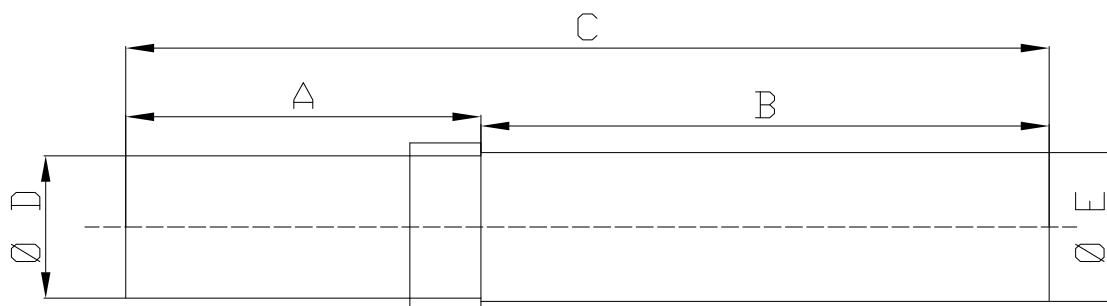
## PE / METAL WELDED TRANSITIONS STEEL

Mechanical METAL/PE transition fittings for networks, service connections and receiving installations with a maximum operating pressure of up to 10 bar.

All the Transitions are personalised with the name and address of the commercialising Client and the pertinent identifications, such as manufacturing order, nomination, etc.



|         | Code   | PE 100 SDR 11 |         |           | Ac to C |         | Weight    | Length |
|---------|--------|---------------|---------|-----------|---------|---------|-----------|--------|
|         |        | A             | Diam. D | Thickness | B       | Diam. E | Total     | Total  |
| RG25A   | 300005 | 205mm.        | 32mm.   | 3,0mm.    | 250mm.  | 1"      | 0,900kg.  | 465mm. |
| RG32A   | 300006 | 205mm.        | 40mm.   | 3,7mm.    | 250mm.  | 1" 1/4  | 1,210kg.  | 465mm. |
| RG50A   | 300009 | 205mm.        | 63mm.   | 5,8mm.    | 300mm.  | 2"      | 2,200kg.  | 510mm. |
| RG80A   | 300011 | 205mm.        | 90mm.   | 8,2mm.    | 300mm.  | 3"      | 3,950kg.  | 510mm. |
| TRG100A | 300013 | 250mm.        | 110mm.  | 10,0mm.   | 400mm.  | 4"      | 7,900kg.  | 660mm. |
| TRG150A | 300014 | 250mm.        | 160mm.  | 14,6mm.   | 400mm.  | 6"      | 12,000kg. | 660mm. |
| TRG200A | 300023 | 250mm.        | 200mm.  | 18,2mm.   | 500mm.  | 8"      | 20,000kg. | 760mm. |



## COMPLIANCE WITH STANDARDS

---



**UNE-EN 1555:** Piping systems in plastic materials for the supply of gaseous fuels. Polyethylene (PE).

**UNE 60405-2:** Gaseous fuels. Transitional PE-metal mechanical connecting fittings for mains, service connections and receiving installations with a maximum operating pressure up to 10 bar. Part 2: Fixed mechanical connections.

**UNE-EN 1982:** Copper and Cu alloys. Ingots and castings.

**UNE-EN 10208-1 AND 2:** Ac pipes for piping of combustible fluids. Technical delivery conditions. Part 1: Class A tubes and class B tubes.

**ISO 17885:2021:** Plastic piping systems. Mechanical fittings for pressure piping systems - Specifications.

